

Huntington Beach Fire Department

Fire Hydrant Installation Standards

REQUIREMENTS

1. PLANS

Plans and specifications shall be submitted to the Public Works Department and Fire Department for review and final approval prior to installation.

2. FIRE HYDRANTS

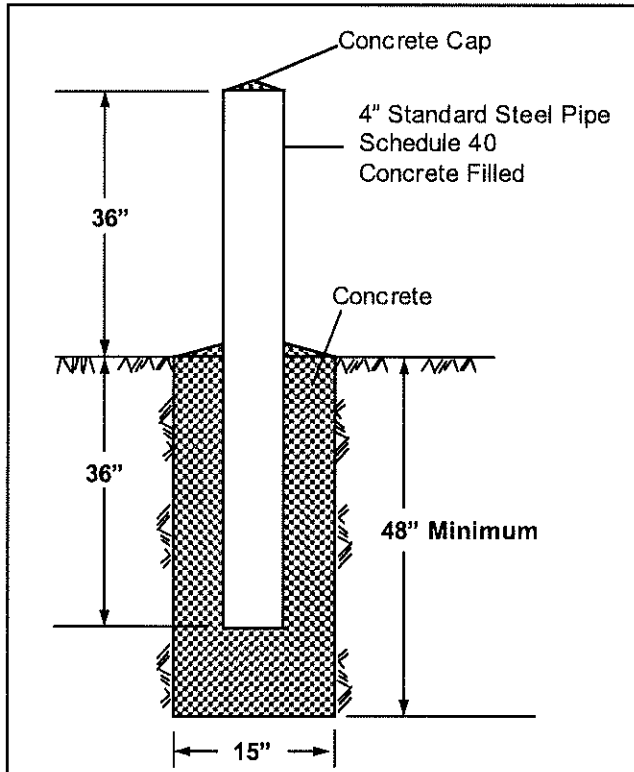
- 2.1 Fire hydrants shall meet specifications outlined by the Public Works Department and Fire Department. All installed fire hydrants and water mains may be dedicated to the City or be declared private.
- 2.2 All required fire hydrants shall be installed, accessible by all weather paved roads, and operable prior to and during the time of construction.
- 2.3 Fire flow requirements and/or peculiar street configurations may dictate the necessity for additional fire hydrants.
- 2.4 Fire hydrants for single family detached and duplex dwellings less than 5,000 square feet, or having fire flows below 1,750 GPM or less, shall be spaced not more than 500 feet along streets, or so that each dwelling is within 250 feet of a hydrant.
- 2.5 Fire hydrants for multi-family residential (tri-plexes or greater, apartment houses, hotels, convents or monasteries) and all commercial or industrial properties shall be spaced not more than 300 feet along streets.
 - 2.5.1 When portions of buildings are further than 150 feet from approved public fire apparatus access roads, on-site private fire hydrants with adequate mains are required. Installation of private mains and hydrants will require permits from both Public Works and Fire departments.
- 2.6 A minimum three foot clear space shall be maintained around the circumference of fire hydrants unless approved by the Fire Department. Outlets shall be positioned to allow fire hose to be attached without restrictive bends when fully charged.
- 2.7 All fire hydrants shall be installed so that outlets are between 14 inches and 24 inches above grade.

Fire Hydrant Installation Standards

- 2.7.1 **All Public Fire Hydrants** – Shall be painted with two coats of Hydra Paint 9000 (yellow in color). Public hydrant maintenance shall be performed by the Public Works Department.
- 2.7.2 **All Private Fire Hydrants** – Shall be delineated as private by painting with two coats of Rust-Oleum #1210, Fire Hydrant Red. Private hydrants shall be maintained and repainted by the responsible party, as needed.
- 2.8 When required by the Fire Code Official, hydrant locations shall be identified by the installation of reflective blue raised pavement markers as described in Section 4 of this City Specification.
- 2.9 The Fire Department may approve any alternative plan, which will fulfill the intent of this section.
- 3. BOLLARDS (Exhibit 1)**
- 3.1 Bollards must be installed when fire hydrants are located in unprotected areas as determined by the Public Works Department's Water Division and the Fire Department.
- 3.2 Plans must indicate the number and location of bollards to be used around the hydrant.
- 3.3 The exact location of the bollards is subject to approval of the Inspector from the Public Works Department and Fire Department, and shall not interfere with the operation of the hydrant.
- 3.4 The steel pipe above ground shall be painted with a minimum of two coats, the same color as the hydrant. The bollards shall also be wrapped with reflective tape.
- 3.5 Bollards shall be maintained in the manner in which they were approved, including repainting by the appropriate party (public or private).
- 4. BLUE RAISED PAVEMENT MARKERS (Exhibits 2 and 3)**
- 4.1 **Two-Lane Streets or Roads** – Markers shall be placed 12 inches from the edge of the painted centerline on the side nearest the fire hydrant. If the street has no centerline, the marker shall be placed 12 inches from the approximate center of the roadway on the side nearest the fire hydrant (Exhibit 2, Figures 407-1, 407-2 and 407-3).
- 4.2 **Streets with Left Turn Lane at Intersection** – Markers shall be placed 12 inches from the edge of painted white channelizing line on the side nearest the fire hydrant (Exhibit 2, Figure 407-4).
- 4.3 **Multi-Lane Streets with Continuous Two-Way Turn Lane** – Markers shall be placed 12 inches from the edge of the painted yellow barrier line on the side nearest the fire hydrant (Exhibit 3, Figure 407-5).

Fire Hydrant Installation Standards

EXHIBIT 1



BOLLARD DETAIL
HBFC Chapter 3
Section 312

BOLLARD DETAIL
HBFC Chapter 3
Section 312.2

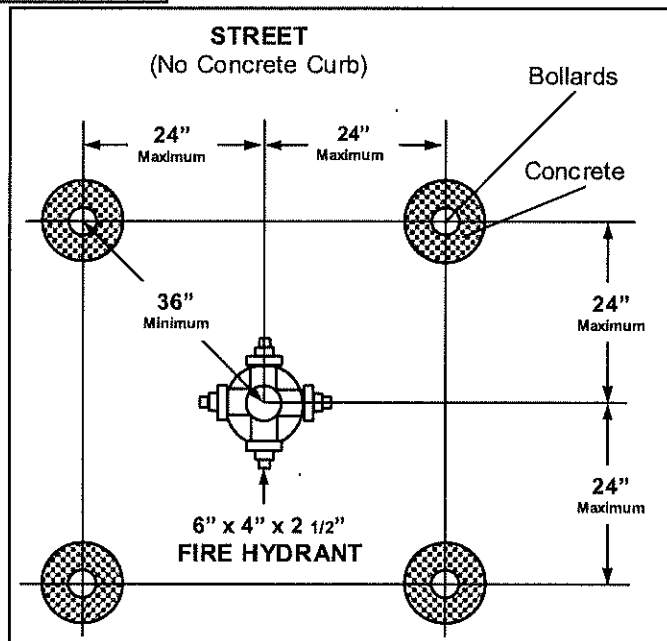
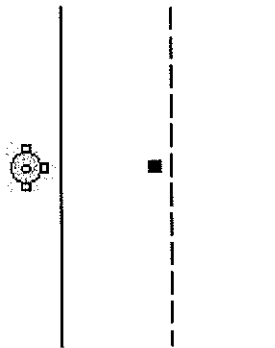


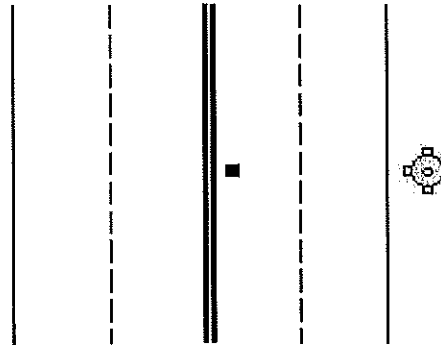
EXHIBIT 2 (Use for Locations of Hydrant Markers Only)

Fire Hydrant Installation Standards

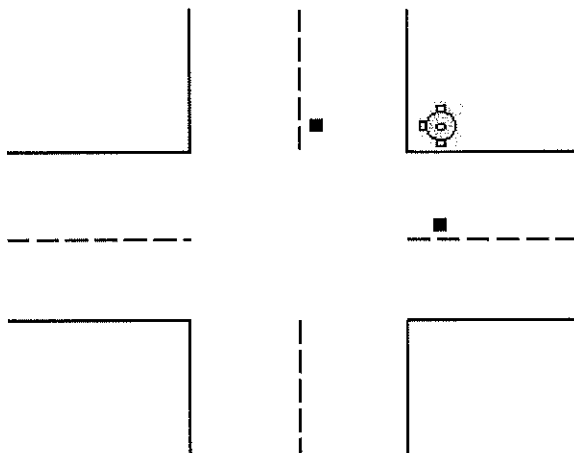
**Figure 407-1
TWO-LANE STREET**



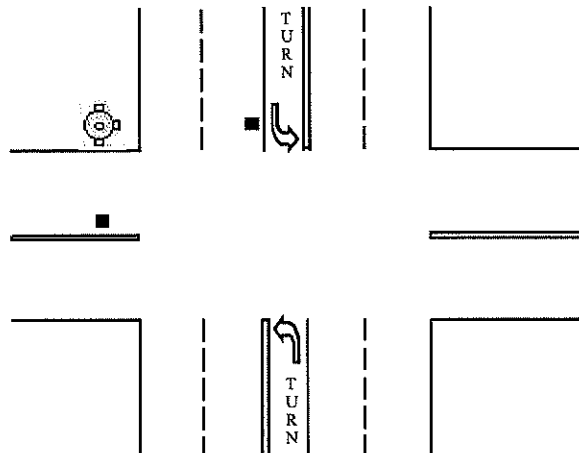
**Figure 407-2
MULTI-LANE STREET**




**Figure 407-3
TWO-LANE STREET
AT INTERSECTION**




**Figure 407-4
FOUR-LANE STREET
WITH TURN LANE AT
INTERSECTION**



LEGEND

 Fire Hydrant

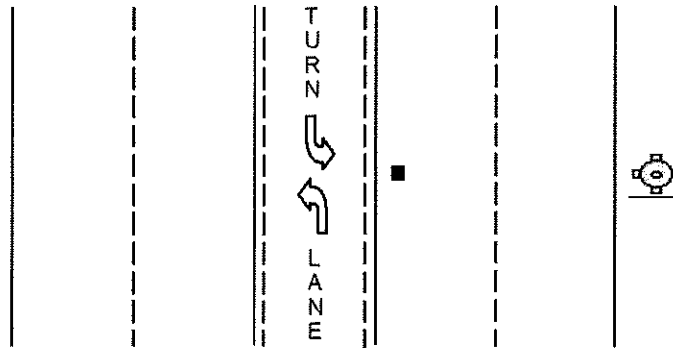
 Reflective Blue Raised Pavement Markers

NOT TO SCALE

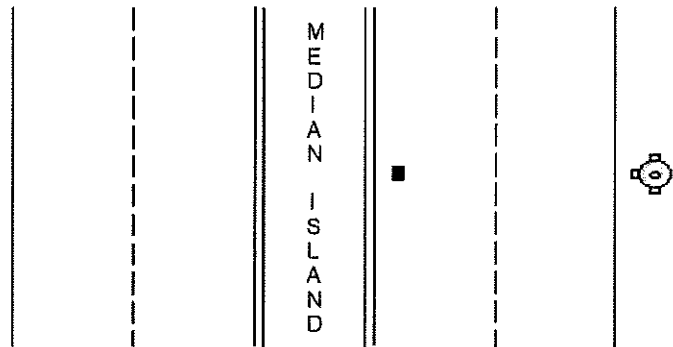
**EXHIBIT 3
(Use for Locations of Hydrant Markers Only)**

Fire Hydrant Installation Standards



**Figure 407-5
MULTI-LANE STREET
WITH CONTINUOUS TWO-WAY
TURN LANE**



**Figure 407-6
MULTI-LANE STREET
DIVIDED BY A MEDIUM**



LEGEND

-  Fire Hydrant
-  Reflective Blue Raised Pavement Markers

NOT TO SCALE