

ORANGE COUNTY JAPANESE AMERICAN COUNCIL

HISTORIC BUILDING SURVEY



Wintersburg Japanese Presbyterian Mission (1910)

Orange County's first Japanese pioneers arrived in the 1890s, but it was not until the early 1900s that they began to have an impact on the county. Churches and schools served as focal points for small Japanese American communities that developed throughout the county. By 1940 more than 1800 Japanese Americans lived here, farming over 11,000 acres.

The JAC's Orange County Historic Building Survey is a preliminary list of pre-1940 Japanese-related sites. In all, 33 surviving buildings were identified; including homes, churches, schools and businesses. This survey is a part of the JAC's research into the history of the county's Japanese American families. The buildings identified form a link to that history which can still be seen today.

This brochure highlights 19 of those buildings in various parts of Orange County.

Also of Interest:

O.K. Grocery Store (315 E. Center Street, Anaheim)

Operated by E.I. Okamoto from 1925-35, and then briefly by K. Matsuhira.

Balboa Market (301 Main Street, Balboa)

Operated by George Kurata from 1937-42.

Oda Barber Shop & Bath House (Fountain Valley Civic Center)

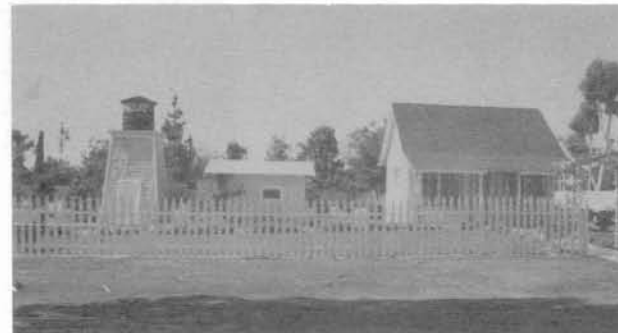
Used in the late 30s on the Oda Ranch at Talbert and Bushard, and moved here for the Fountain Valley Historical Society in 1981. The Bath House is still in working order.

Kadowaki Home (1715 W. Second Street, Santa Ana)

Tsune Kadowaki moved here with her children after her husband's death in 1933. They lived here until 1940.

Kato's Art Goods (470 S. Coast Hwy., Laguna Beach)

Operated by Ryoji Kato from 1936-42.



Oda Barber Shop and Bath House

The Japanese American Council is a part of the Historical & Cultural Foundation of Orange County, a not-for-profit corporation dedicated to preserving the heritage of the county's ethnic populations. **For more information, please write:**

Japanese American Council
c/o Historical & Cultural Foundation of O.C.
17752 Skypark Circle, Suite 260
Irvine, CA 92714

1. Wintersburg Japanese Presbyterian Church (7642 Warner Avenue, Huntington Beach)

Founded in 1904 as a Mission for the area's growing Japanese population, the congregation's first two Chapels are here. The first, dedicated May 8, 1910, stands at the rear along with the original Manse. After the Mission became a Church in 1930, planning began for a new stucco Church, which was completed in 1934 and used until 1966. The congregation is still active today in Garden Grove.

Next door is the home of Mr. and Mrs. C.M. Furuta built in 1912. Furuta was a prominent supporter of the Church. Some of his gold fish ponds also remain on the property.

2. Garden Grove Japanese Language School (10771 Sherman Street, Garden Grove)

Erected in 1916-17, Garden Grove's School served the large Japanese American community in that area. It was closed from 1942-1962, but is in use again today.

3. Oba Home (1014 E. Commonwealth, Fullerton)

This home, and five acres around it, were acquired by Kyuhachi Oba (1880-1950) around 1920. During the 20s and 30s his younger brother, Mankichi, lived here with his family while Kyuhachi was working on the Ross Ranch. In the rear is a second house moved in from the oilfields. Both homes are still owned by the Oba family.

4. Japanese Free Methodist Church (902 N. Citron, Anaheim)

Founded in 1921, this was the congregation's third Church, built about 1935. Behind it at 707 W. LaVerne, is their first Church, built in 1922 and later moved here as a Manse. The congregation is still active today at a new location.

Next door is the Watanabe Home (908 N. Citron), built in 1923.

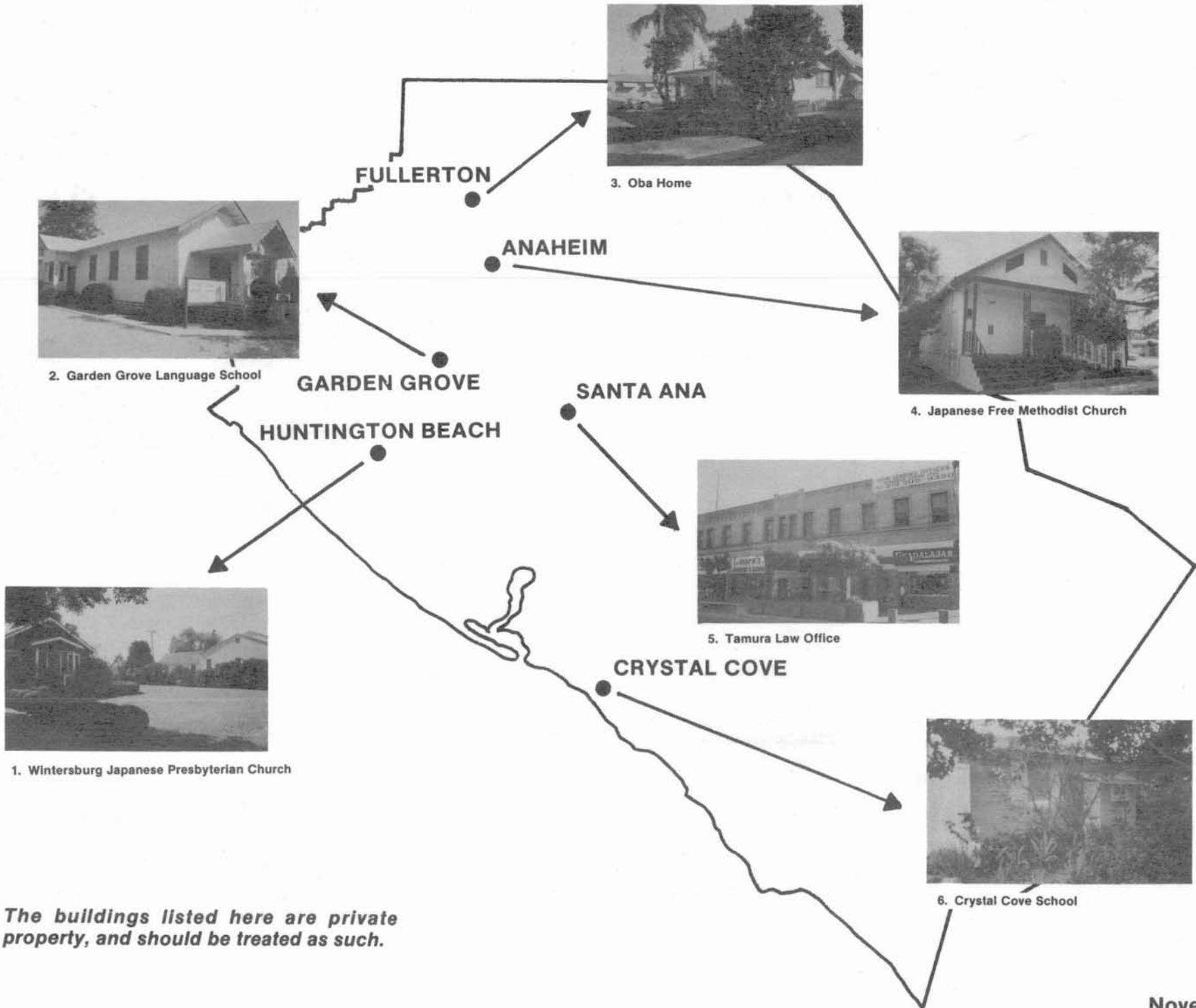
5. S.K. Tamura Law Office (202 E. Fourth Street, Santa Ana)

Stephen K. Tamura (1911-1981), an Orange County-born Nisei, opened his first law office on the second floor of this building in 1938. He was the first Japanese American attorney in the county, and later served as a Superior Court Judge.

Nearby is his second office (104½ E. Fourth) used from 1939-42.

6. Crystal Cove School (34 Crystal Cove)

This Japanese Language School (or "Gauken") was built around 1935 by the Japanese American farming community above Crystal Cove. It was also used as a community hall by local residents. The building was moved to this site in 1949 and incorporated into cottage #34. It is now included on the National Register of Historic Places.



The buildings listed here are private property, and should be treated as such.